



RUGGED, SECURE
LTE ROUTER



Manage this device with
Digi Remote Manager

DIGI IX20

Cloud managed networking for critical applications

Digi IX20 is a full-featured cellular router that can scale from basic connectivity applications to industrial-class routing and security solutions. Its flexible power and connectivity options make it a versatile choice for use in industrial infrastructure, digital signage, retail kiosks, service terminals and other critical assets with a need for secure transactions.

The high-performance architecture of the Digi IX20 router provides primary and backup WWAN connectivity over software selectable multi-carrier LTE. Digi IX20 supports software features for advanced security (stateful firewall, MAC filtering and VPN), redundancy (Digi SureLink®) and management (SNMP, event logging, analyzer trace and QOS), enabling it to be used in PCI or NERC-CIP compliant applications.

Digi IX20 can be managed with Digi Remote Manager®, a cloud-based solution that facilitates easy setup, mass configuration, maintenance and support for hundreds or even thousands of remote Digi and third-party devices. Digi Remote Manager lets you evaluate, update and configure your Digi enterprise routers and gateways — and the health of your network — at scale, after deployment.

The Digi IX20 family of routers has a single part number, which simplifies inventory control for global distribution and deployment. In addition, Digi IX20 is designed for Digi CORE® plug-in LTE modems that can be changed out or upgraded without replacing the entire router.

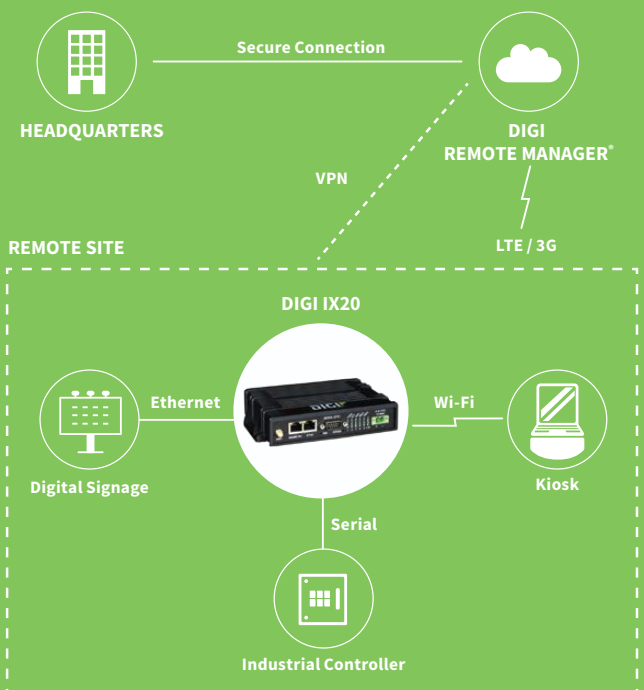
FEATURES AND BENEFITS

- Compact and economical cellular routing platform with industrial feature set
- Redundant connectivity with dual SIMs and Digi SureLink
- Global bands and single part number to simplify global distribution, deployment and management
- Built-in Digi TrustFence® for device security, device identity and data privacy
- Digi Remote Manager software for easy setup, mass configuration and management
- Dual Ethernet ports and single serial (RS-232) port

RELATED PRODUCTS



APPLICATION EXAMPLE



SPECIFICATIONS

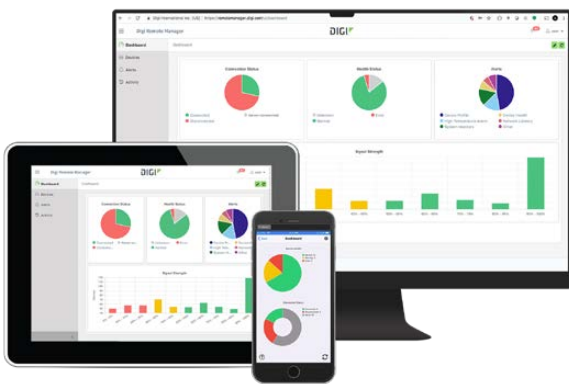
DIGI IX20

CELLULAR	
CERTIFICATIONS	Visit https://www.digi.com/resources/certifications for latest certifications
LTE (G4) WITH DIGI CORE® PLUG-IN LTE MODEM 1002-CMG4	LTE Cat 4: B1, B2, B3, B4, B5, B7, B8, B13, B18, B19, B20, B25, B26, B28, B38, B39, B40, B41 3G: B1, B2, B4, B5, B6, B8, B19 2G EDGE / GPRS: 850 / 900 / 1800 / 1900 MHz
CONNECTORS	(2) 50 Ω SMA (center pin: female)
SIM SLOTS	(2) Mini-SIM (2FF)
SIM SECURITY	Secured in cellular module
WI-FI	
MODULE	1 x 1 SISO dual-band 802.11a/b/g/n/ac (2.4 GHz / 5 GHz)
AUTHENTICATION	TACACS+, Enterprise RADIUS
MODES	Client mode and access point mode simultaneously
CLIENTS	Maximum 10 clients (access point mode: regardless of combination of clients and access points)
ACCESS POINTS	Maximum 2 access points (access point mode: regardless of combination of clients and access points)
SECURITY	WPA/WPA-2 personal, WPA/WPA-2 enterprise
CONNECTORS	(1) 50 Ω SMA (center pin: male)
SOFTWARE AND MANAGEMENT	
REMOTE MANAGEMENT	Digi Remote Manager®; SNMP v2/v3 (user installed/managed)
LOCAL MANAGEMENT	WebUI (HTTP/HTTPS); CLI (Telnet, SSH)
MANAGEMENT/ TROUBLESHOOTING TOOLS	FTP client, SCP; protocol analyzer with PCAP for Wireshark; event logging with Syslog and SMTP client; NTP/SNTP; Nagios, Intelliflow, IPerf, DynamicDNS, Ping, Traceroute
MEMORY	256 MB RAM, 256 MB flash
ETHERNET	
PORTS	(2) RJ-45; 10/100 Mbps (auto-sensing)
SERIAL	
PORTS	(1) DB9M; RS-232 DTE; Signal support TXD, RXD, CTS, DTR, DCD, flow control software (XON/OFF), hardware supported (CTS/RTS)
PHYSICAL	
DIMENSIONS (L x W x H)	107 mm x 162 mm x 35 mm (4.21 in x 6.38 in x 1.38 in)
WEIGHT	0.65 kg (1.4 lb)
STATUS LEDs	Power, Internet, Wi-Fi, SIM 1, SIM 2, signal strength (5), LTE
ENCLOSURE	Glass-filled polyphenylene sulphide (PPS) / IP30
POWER REQUIREMENTS	
POWER INPUT	9 - 30 VDC, 1.0 A maximum
POWER CONSUMPTION	2.5 W typical (idle); 6 W typical (peak Tx/Rx)
ENVIRONMENTAL	
OPERATING TEMPERATURE	Models with Wi-Fi: -20° C to 70° C (-4° F to 158° F); device performance may be impacted above 50° C (122° F)
	Models without Wi-Fi: -40° C to 70° C (-40° F to 158° F); device performance may be impacted above 50° C (122° F)
RELATIVE HUMIDITY	5% to 95% (non-condensing)
APPROVALS	
CELLULAR	Visit https://www.digi.com/resources/certifications for latest cellular certifications
SAFETY	IEC62368-1, CB, EN62311
ENVIRONMENTAL	ROHS3
EMISSIONS / IMMUNITY	CE; RED; FCC Part 15, Subpart B; ICES-003; AU/NZS CISPR32
WARRANTY	
PRODUCT WARRANTY	3-year

CELLULAR CONNECTIVITY

PROTOCOL SUPPORT	HTTP, HTTPS, FTP client, SSL, TLS v1.2, SCP (client and server), SFTP, SMTP client for use by scripts and the command line, SNMP (v2/v3), SSH; remote management via Digi Remote Manager®; Protocol analyzer, ability to capture PCAP for use with Wireshark; DynDNS; Dynamic DNS client compatible with BIND9/No-IP/DynDNS; Captive portal, Intelliflow; Nagios, DNS server, NTP server, Multicast, mDNS, IPerf
SECURITY	IP filtering, stateful firewall, custom firewall rules (iptables), address and port translation; SSL, SSLv2, SSLv3, FIPS 197, open VPN client and server; VPN tunnels; Authentication: RADIUS, TACACS+; certificates; MAC address filtering; VLAN support
VPN	IPSec with IKEv1, IKEv2, NAT Traversal; OpenVPN client and server; GRE VPN tunnels; Cryptology: SHA-1/256/384/512, MD5, RSA; Encryption: 3DES and AES up to 256-bit (CBC mode for IPsec); Diffie Hellman: DH groups 1-32 (CURVE448)
ROUTING / FAILOVER	IP pass-through; NAT, NAPT with IP port forwarding; Ethernet bridging; GRE; Multicast routing; Routing protocols: RIP (v1, v2) OSPF, BGP; IP failover: VRRP; automatic failover, Digi SureLink®
OTHER PROTOCOLS	DHCP; Dynamic DNS client compatible with No-IP/DynDNS

DIGI REMOTE MANAGER®



CAPABILITIES

- Centralized management of remote devices over 3G/4G/LTE
- Define standard configurations and automatically monitor individual devices for PCI security compliance
- Get alerts and create reports on performance statistics, including connection history, signal quality, latency, data usage and packet loss
- No servers or applications to operate and maintain
- Perform tasks across your entire device network in minutes
- Edit configurations and update firmware for individual devices or groups
- Monitor the status and location of remote devices via a web browser
- Activate or deactivate cellular lines and monitor data consumption to ensure you never incur overage charges

INFRASTRUCTURE

- Hosted in a commercial-grade SAS 70-certified environment
- Superior availability, operating to 99.9% or greater
- Open APIs available to support application development

SECURITY

- Certified SSAE-16 facilities
- Over 175 security controls in place to protect your data
- Enables compliance with security frameworks like PCI, HIPAA, NIST
- Earned SkyHigh's Cloud Trust Program highest rating of Enterprise-Ready

PRODUCT IMAGES

FRONT



WITH ANTENNAS



BACK



PART NUMBERS	DIGI® IX20
IX20-WAG4	Digi IX20 - LTE Cat 4 Global, Wi-Fi, (2) Ethernet, DB-9 RS-232; includes DIN rail clip, power supply, (2) cellular antenna, Wi-Fi antenna and Ethernet cable
IX20-0AG4	Digi IX20 - LTE Cat 4 Global, (2) Ethernet, DB-9 RS-232, includes DIN rail clip, power supply, (2) cellular antenna and Ethernet cable
IX20-W0G4	Digi IX20 - LTE Cat 4 Global, Wi-Fi, (2) Ethernet, DB-9 RS-232
IX20-00G4	Digi IX20 - LTE Cat 4 Global, (2) Ethernet, DB-9 RS-232

PART NUMBERS	ACCESSORIES
24000155	Power supply with plug tips for US, UK, EU, AU
170017	Cellular antenna
29000863	Wi-Fi antenna
440094	Ethernet cable - 2 m (6 ft)
76002093	DIN rail mounting bracket kit
76002095	DIN rail clip kit

The information provided in this document is preliminary and may be subject to change without notice.

DIGI SERVICE AND SUPPORT / You can purchase with confidence knowing that Digi is always available to serve you with expert technical support and our industry leading warranty. For detailed information visit www.digi.com/support.

© 1996-2020 Digi International Inc. All rights reserved.
All trademarks are the property of their respective owners.

91004421
A8/520

DIGI INTERNATIONAL WORLDWIDE HQ
877-912-3444 / 952-912-3444 / www.digi.com

DIGI INTERNATIONAL JAPAN
+81-3-5428-0261 / www.digi-intl.co.jp

DIGI INTERNATIONAL GERMANY
+49-89-540-428-0

DIGI INTERNATIONAL SINGAPORE
+65-6213-5380

DIGI INTERNATIONAL CHINA
+86-21-50492199 / www.digi.com.cn

